

# **TRI-CITIES AREA TRANSPORTATION IMPROVEMENT PROGRAM**

## **Fiscal Years 2006-2008**

THIS REPORT WAS PREPARED BY THE TRI-CITIES AREA  
METROPOLITAN PLANNING ORGANIZATION AND FINANCED  
BY THE U.S. DEPARTMENT OF TRANSPORTATION  
AND THE VIRGINIA DEPARTMENT OF TRANSPORTATION

**March 2006**

Tri-Cities Area Transportation Improvement Program  
FY 2006 – FY 2008

**TABLE OF CONTENTS**

**Introduction ..... 1**

    Project Selection..... 2

    Metropolitan TIP Development Process..... 4

    Air Quality Conformity..... 4

    Urbanized Area Redefinition ..... 4

    Section 5316..... 5

    Regional Surface Transportation Program (RSTP)..... 5

**Transit Improvement Projects..... 6**

    Job Access and Reverse Commute Program ..... 6

    PAT Capital and Operating Projects ..... 6

    Table 1: Transit Capital & Operating Projects (FY 2005 - 2007) ..... 6

    Table 2: Transit Operating Assistance: Petersburg Area Transit (Estimated Operating Expenses) ..... 6

    Table 3: Transit Operating Assistance: Petersburg Area Transit (Fare Revenue) ..... 6

    Table 4: Transit Capital & Operating Projects – Cost Summary ..... 6

    Table 5: Paratransit Service (Capital) ..... 6

**Interstate, Primary & Urban Highway Improvement Projects.....14**

    Table 6: Interstate, System Project Allocations..... 14

    Table 7: Primary System Project Allocations ..... 14

    Table 8: Urban System Project Allocations..... 14

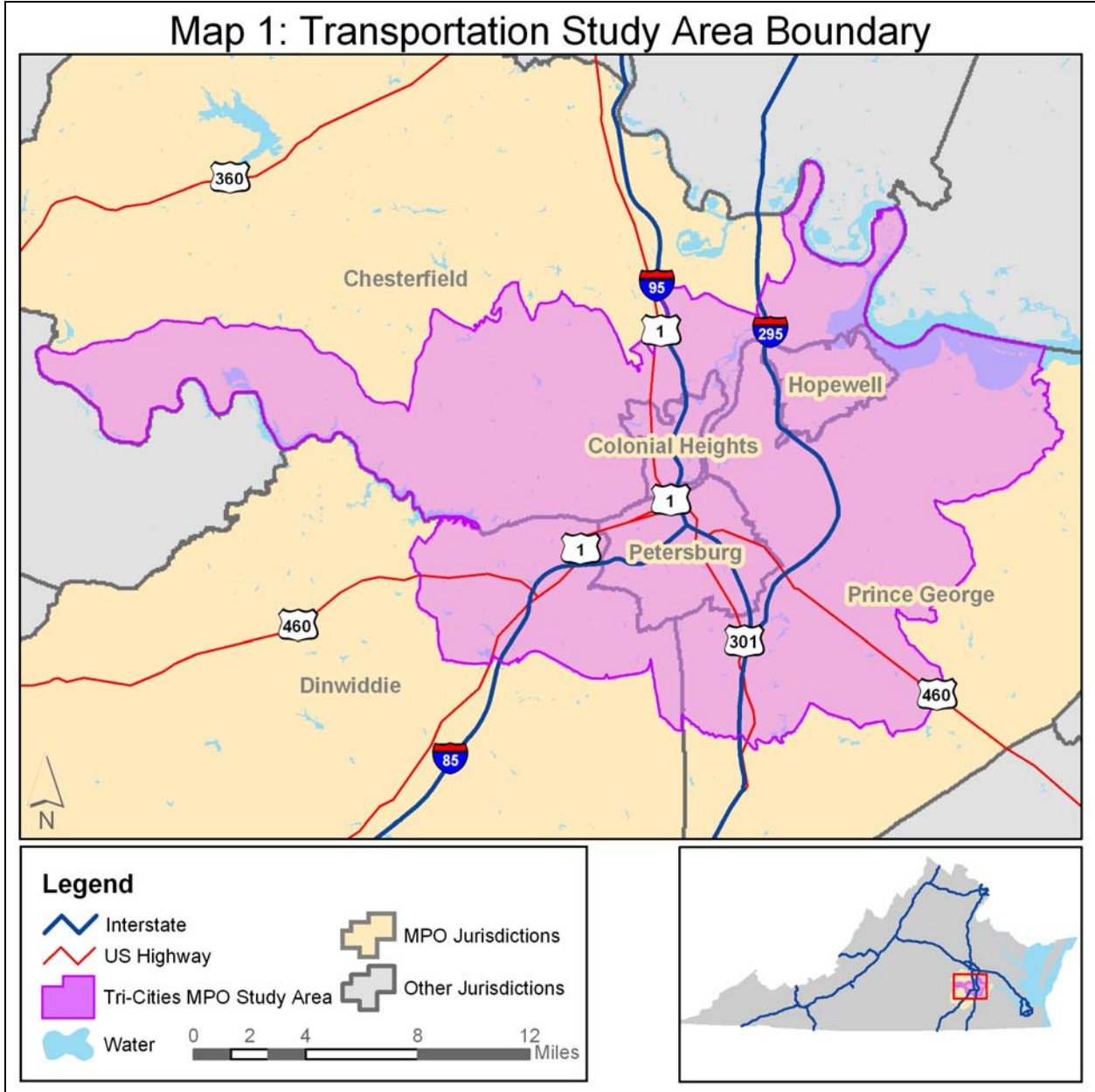
    Table 9: Secondary System Project Allocations ..... 14

    Table 10: Miscellaneous Project Allocations..... 14

    Table 11: Public Transportation System Project Allocations..... 14

Tri-Cities Area Transportation Improvement Program  
FY 2006 – FY 2008

Map 1: Transportation Study Area Boundary



Tri-Cities Area Transportation Improvement Program  
FY 2006 – FY 2008

**INTRODUCTION**

The Tri-Cities Area FY'S 2006-2008 Transportation Improvement Program (TIP) is a listing of transportation improvement projects expected to receive obligation funding using federal funds over the next three-year period in the Tri-Cities portion of the Richmond Urbanized Area. The Policy Committee of the Tri-Cities Area Metropolitan Planning Organization (MPO) is scheduled to advertise this document along with an air quality conformity analysis of the listed projects during the latter part of March 2006 and take action mid-April 2006. The Commonwealth Transportation Board (CTB), Petersburg Area Transit (PAT) and the Tri-Cities Area MPO developed FY 2006, FY 2007 and FY 2008 project obligation information during the winter of 2006.

The Tri-Cities Area, as shown in Figure 1, is comprised of the cities of Petersburg, Hopewell, Colonial Heights and portions of the counties of Prince George, Dinwiddie, and southern Chesterfield. The Tri-Cities Metropolitan Planning Organization (MPO) is designated and the TIP is prepared pursuant to Titles 1 and 3 of the Safe, Accountable, Flexible, Efficient, Transportation Equity Act: A Legacy for User (SAFETEA-LU). Major federal-aid highway and transit programs referred to in this document are as follows:

- 1) Interstate (I)
- 2) Interstate Maintenance (IM)
- 3) National Highway System (NHS)
- 4) Bridge Rehabilitation (BH)
- 5) Bridge Replacement (BR)
- 6) Surface Transportation Program (STP)
- 7) Congestion Mitigation/Air Quality (CMAQ)
- 8) Transit Sections 5316, 5307, 5309 and 5310
- 9) Enhancement (EN)
- 10) Hazard Elimination Safety (Section 152) (HES)
- 11) State (S)
- 12) Rail Safety (RS)
- 13) Regional Surface Transportation Program (RSTP)
- 14) Federal Highway Reimbursement Anticipation Notes (FRAN)

Tri-Cities Area Transportation Improvement Program  
FY 2006 – FY 2008

**Project Selection**

Projects listed in the metropolitan TIP as receiving federal funding have been identified in the financially constrained Tri-Cities Area 2026 Transportation Plan. CMAQ, RSTP and mass transit projects have been selected by the Tri-Cities Area MPO and the Petersburg City Council. Other projects, including interstate, primary and enhancement, have been selected by the Commonwealth Transportation Board.

The MPO - Technical Committee, an advisory committee to the MPO - Policy Committee, recommends CMAQ and RSTP projects for programming into the FY 2006 - 2008 TIP. The criteria considered in the Tri-Cities Area metropolitan planning process for selecting CMAQ projects include the following:

- 1) completion of funding needs for CMAQ projects partially funded during a previous year funding cycle;
- 2) reduction in hydrocarbons and NOx with project implementation;
- 3) availability of local government project support;
- 4) consistency with federal CMAQ project eligibility requirements; and
- 5) citizen input.

Candidate RSTP projects are recommended by MPO members and rated by MPO - Technical Committee members using accident information, congestion level and other need indicators. The MPO - Policy Committee selects RSTP projects

A periodic update of a transit development program (TDP) provides a multi-year perspective on transit capital and operating needs for the metropolitan area. Mass transit capital and operating improvement projects are developed for the TDP by Petersburg Area Transit (PAT), the designated recipient for Section 5307. The TDP is later incorporated into the long-range Transportation Plan as the transit element. Mass transit projects are then selected from the long-range Transportation Plan by the Petersburg City Council and the Tri-Cities Area MPO – Policy Committee for inclusion in the metropolitan TIP. The criteria used to select projects from previous TDPs in the Tri-Cities Area included the following:

- 1) availability of public and/or private financial support for subsidizing annual operating deficits;
- 2) availability of public and/or private financial support for capitalizing metropolitan transit services;
- 3) individual local government acceptance that anticipated nonfarebox revenues will be at a sufficient level to justify support for the expenditure of local funds for fixed route transit service;
- 4) compliance with the Americans With Disabilities Act;

Tri-Cities Area Transportation Improvement Program  
FY 2006 – FY 2008

- 5) identification of a demographic trend or citizen survey which may indicate a need for expanded transit service; and
- 6) citizen and private sector input obtained from the metropolitan public involvement process or the annual operating public hearing conducted by the local transit operator, Petersburg Area Transit (PAT).

Tri-Cities Area Transportation Improvement Program  
FY 2006 – FY 2008

**Metropolitan TIP Development Process**

Each project listed in the TIP includes information on estimated project cost, federal obligation amount and a tentative implementation schedule by project phase. In order to meet federal requirements for public involvement for the metropolitan transportation planning process, the Tri-Cities MPO conducts an annual public information meeting. The public meeting provides a forum for oral and written comments on transportation needs in the metropolitan area. The Metropolitan Planning Organization considers the statements presented during the annual public meeting. Local governments also conduct periodic public hearings on local comprehensive plans; six-year secondary Improvement programs and transit development plans. Public comments received during these meetings are considered by the MPO membership. In addition, the Commonwealth Transportation Board conducts annual public hearings at the construction district level throughout the Commonwealth in order to obtain public input on transportation needs and priorities. After the metropolitan TIP is endorsed by the MPO, it is forwarded to the Commonwealth Transportation Board for inclusion in the Statewide Transportation Improvement Program (STIP). Individual projects are advanced for federal authorization and are usually implemented by the State and/or local governments as scheduled.

**Air Quality Conformity**

Effective June 15, 2004, the U.S. Environmental Protection Agency determined the cities of Colonial Heights, Hopewell, Petersburg and the counties of Chesterfield and Prince George have exceeded the applicable national standard for ground level ozone. The Clean Air Act Amendments (CAAA) of 1990 contains provisions that require the TIP and the State Implementation Plan for air quality to be consistent. The CAAA and the transportation conformity regulations require the preparation of documentation supporting the finding that the implementation of projects listed will not exceed the mobile source emission budget contained in the State Implementation Plan. VDOT and/or its project consultant will evaluate the air quality impacts of the transportation projects listed in the TIP and the long-range transportation plan. This analysis will document the air quality impacts of the proposed improvement projects and compare these impacts with the allowable mobile source emissions identified in the State Implementation Plan for air quality. The results of this analysis will receive public review prior to action on the TIP by the Tri-Cities Area MPO – Policy Committee.

**Urbanized Area Redefinition**

The U.S. Department of Transportation uses the urbanized area unit to make sub-state allocations for certain federal programs, including Sections 5307 and the Regional Surface Transportation Program. The urbanized area unit is a geographic unit defined by the U.S. Census Bureau based on land area, population and population density criteria. On May 1, 2002, the U.S. Bureau of Census redefined urbanized areas nationwide

Tri-Cities Area Transportation Improvement Program  
FY 2006 – FY 2008

based on revised urbanized area criteria and using 2000 census data. As a result of this redefinition process, the Petersburg, Colonial Heights, Hopewell and Richmond urbanized areas were merged form a newly defined Richmond Urbanized Area with a 2000 population of 818,836. Petersburg Area Transit is a designated recipient for Section 5307 funds in the Richmond Urbanized Area.

**Section 5316**

Beginning with Federal FY 2003 allocations, Federal allocations under the Jobs Access and Reverse Commute (Section 5316) were made to the Richmond Urbanized Area as one unit. The transit operators decide how Section 5707 formula funds are distributed within the Richmond Urbanized Area.

For the purpose of preparing the FY 2006-2008 metropolitan TIP, it is assumed PAT operations will continue unchanged. The transit operators in the Richmond Urbanized Area and the Virginia Department of Rail and Public Transportation are currently not a party to the existing regional transportation and air quality planning agreements pursuant to 23 CFR, Part 450 and 40 CFR Part 51 for the Richmond Urbanized Area.

Beginning in FY 2007, Section 5316 projects in the Tri-Cities Area will be derived from a locally developed Public Transit Human Services Coordination Plan for the Richmond Urbanized Area. The Virginia Department of Rail and Public Transportation, with guidance from the Federal Transit Administration, will be the lead agency responsible for this new planning process.

**Regional Surface Transportation Program (RSTP)**

The Tri-Cities Area MPO receives annual RSTP revenue estimates from VDOT based the percentage urbanized area population within the Tri-Cities portion of the Richmond Urbanized Area. VDOT uses the latest decennial U.S. census of population to determine urbanized area population for MPOs with a population greater than 200,000 in the Commonwealth. Urbanized areas are generally defined by the U.S. Census Bureau as land areas with more than 1,000 persons residing per square mile. The MPO – Policy Committee receives approximately \$2.1 million annually for allocation to qualified transportation improvement projects. Qualified projects are submitted for periodic review and rating by the MPO. Criteria used to rate RSTP projects in the Tri-Cities Area include congestion level, accident history and planning factors.

Tri-Cities Area Transportation Improvement Program  
FY 2006 – FY 2008

**TRANSIT IMPROVEMENT PROJECTS**

Petersburg Area Transit (PAT) is the local transit operator for fixed-route public mass transit service in the Tri-Cities Area. Its current routes serve the City of Petersburg, portions of Prince George, Colonial Heights Hopewell, Dinwiddie and the village of Ettrick, located in Chesterfield County. The PAT multi-year capital and operating budget, is being updated and will be incorporated into the 2026 Transportation Plan as an amendment. The transit project information identified in the FY 2006–2008 metropolitan TIP is based on the assumption PAT will continue to provide existing transit services.

**Job Access and Reverse Commute Program**

Section 5316 of SAFETEA-LU provides competitive grants to existing fixed-based transit operators such as PAT for new job related transportation services. Individuals whose family income is at or below 150 percent of the poverty line qualify for these transportation services. A Job Access Transportation Program Committee for the Crater Region was formed to prepare a Job Access and Reverse Commute Transportation Plan for the region. The membership of this Committee included representatives from the State employment agency, the local workforce investment board, PAT, a community college and CPDC staff. PAT intends to continue to apply for annual Section 5316 funding under the Job Access and Reverse Commute Program for projects identified in the 2002 Crater Region Job Access and Reverse Commute Plan. The Job Access and Reverse Commute Plan for the Crater Region has been updated. It is anticipated PAT will continue to implement projects under this program. Proposed multi-year capital and operating projects under the Section 5316 program are identified in this document.

**PAT Capital and Operating Projects**

Included within the list of capital projects is the proposed Downtown Transit Center (DTC). The DTC would replace the current on-street transfer site being used at the intersection of Franklin and Sycamore streets. The relocation of the transfer area would have some impact on the existing route structure. The Petersburg City Council and the Commonwealth Transportation Board have endorsed the construction of the DTC. This project received \$2,500,000 in funding obligation during FY 2004 and \$3,000,000 during FY 2005 from the Statewide Surface Transportation Program (STP) by the Commonwealth Transportation Board.







**TIP for Public Transportation & TDM Projects FY06 - FY09 (Continued)**  
**Metropolitan Planning Organization: Petersburg Area Metropolitan Planning Organization**

Name of Federal Funds Recipient:		FY06 (\$ in 000's)	FY07 (\$ in 000's)	FY08 (\$ in 000's)	FY09 (\$ in 000's)	Comments
MPO Project Number	Category	Amount	Amount	Amount	Amount	
	Project Description	FY	Source	Source	Source	
<b>Name of Federal Funds Recipient:</b>						
MPO Project Number	Category	Amount	Source	Amount	Source	Comments
	Project Description	FY06 (\$ in 000's)	FY07 (\$ in 000's)	FY08 (\$ in 000's)	FY09 (\$ in 000's)	
		Amount	Source	Amount	Source	
<b>Name of Federal Funds Recipient:</b>						
MPO Project Number	Category	Amount	Source	Amount	Source	Comments
	Project Description	FY06 (\$ in 000's)	FY07 (\$ in 000's)	FY08 (\$ in 000's)	FY09 (\$ in 000's)	
		Amount	Source	Amount	Source	
<b>Name of Federal Funds Recipient:</b>						
MPO Project Number	Category	Amount	Source	Amount	Source	Comments
	Project Description	FY06 (\$ in 000's)	FY07 (\$ in 000's)	FY08 (\$ in 000's)	FY09 (\$ in 000's)	
		Amount	Source	Amount	Source	
<b>Name of Federal Funds Recipient:</b>						
MPO Project Number	Category	Amount	Source	Amount	Source	Comments
	Project Description	FY06 (\$ in 000's)	FY07 (\$ in 000's)	FY08 (\$ in 000's)	FY09 (\$ in 000's)	
		Amount	Source	Amount	Source	

**TIP for Public Transportation & TDM Projects FY06 - FY09 (Continued)**  
**Rural Projects for Construction District Richmond District**

<b>Name of Federal Funds Recipient:</b>										
<u>Project Number</u>	<u>Category</u>	<u>Project Description</u>	<u>Amount</u>	<u>FY</u>	<u>Source</u>	<u>Amount</u>	<u>Source</u>	<u>Amount</u>	<u>Source</u>	<u>Comments</u>
			FY06 (\$ in 000's)			FY07 (\$ in 000's)		FY08 (\$ in 000's)		FY09 (\$ in 000's)
<b>Name of Federal Funds Recipient:</b>										
<u>Project Number</u>	<u>Category</u>	<u>Project Description</u>	<u>Amount</u>	<u>FY</u>	<u>Source</u>	<u>Amount</u>	<u>Source</u>	<u>Amount</u>	<u>Source</u>	<u>Comments</u>
			FY06 (\$ in 000's)			FY07 (\$ in 000's)		FY08 (\$ in 000's)		FY09 (\$ in 000's)
<b>Name of Federal Funds Recipient:</b>										
<u>Project Number</u>	<u>Category</u>	<u>Project Description</u>	<u>Amount</u>	<u>FY</u>	<u>Source</u>	<u>Amount</u>	<u>Source</u>	<u>Amount</u>	<u>Source</u>	<u>Comments</u>
			FY06 (\$ in 000's)			FY07 (\$ in 000's)		FY08 (\$ in 000's)		FY09 (\$ in 000's)
<b>Name of Federal Funds Recipient:</b>										
<u>Project Number</u>	<u>Category</u>	<u>Project Description</u>	<u>Amount</u>	<u>FY</u>	<u>Source</u>	<u>Amount</u>	<u>Source</u>	<u>Amount</u>	<u>Source</u>	<u>Comments</u>
			FY06 (\$ in 000's)			FY07 (\$ in 000's)		FY08 (\$ in 000's)		FY09 (\$ in 000's)
<b>Name of Federal Funds Recipient:</b>										
<u>Project Number</u>	<u>Category</u>	<u>Project Description</u>	<u>Amount</u>	<u>FY</u>	<u>Source</u>	<u>Amount</u>	<u>Source</u>	<u>Amount</u>	<u>Source</u>	<u>Comments</u>
			FY06 (\$ in 000's)			FY07 (\$ in 000's)		FY08 (\$ in 000's)		FY09 (\$ in 000's)

**TIP for Public Transportation & TDM Projects FY06 - FY09 (Continued)**

**Rural Projects for Construction District Richmond District**

Name of Federal Funds Recipient:		FY06 (\$ in 000's)	FY07 (\$ in 000's)	FY08 (\$ in 000's)	FY09 (\$ in 000's)	Comments
Project Number	Project Description	Amount FY Source	Amount Source	Amount Source	Amount Source	
<b>Name of Federal Funds Recipient:</b>						
Project Number	Project Description	FY06 (\$ in 000's) Amount FY Source	FY07 (\$ in 000's) Amount Source	FY08 (\$ in 000's) Amount Source	FY09 (\$ in 000's) Amount Source	Comments
<b>Name of Federal Funds Recipient:</b>						
Project Number	Project Description	FY06 (\$ in 000's) Amount FY Source	FY07 (\$ in 000's) Amount Source	FY08 (\$ in 000's) Amount Source	FY09 (\$ in 000's) Amount Source	Comments
<b>Name of Federal Funds Recipient:</b>						
Project Number	Project Description	FY06 (\$ in 000's) Amount FY Source	FY07 (\$ in 000's) Amount Source	FY08 (\$ in 000's) Amount Source	FY09 (\$ in 000's) Amount Source	Comments
<b>Name of Federal Funds Recipient:</b>						
Project Number	Project Description	FY06 (\$ in 000's) Amount FY Source	FY07 (\$ in 000's) Amount Source	FY08 (\$ in 000's) Amount Source	FY09 (\$ in 000's) Amount Source	Comments
<b>Name of Federal Funds Recipient:</b>						
Project Number	Project Description	FY06 (\$ in 000's) Amount FY Source	FY07 (\$ in 000's) Amount Source	FY08 (\$ in 000's) Amount Source	FY09 (\$ in 000's) Amount Source	Comments

**TIP for Public Transportation & TDM Projects FY06 - FY09 (Continued)**

**Commonwealth Transportation District: Richmond District**

	Previous Fiscal Years	FY06 (\$ in 000's)	FY07 (\$ in 000's)	FY08 (\$ in 000's)	FY09 (\$ in 000's)
FTA 5307	-	1,134	767	1,165	1,015
FTA 5309 FG	-	-	-	-	-
FTA 5309	-	792	-	-	-
FTA 5310	-	-	100,000	-	-
FTA 5311	-	-	-	-	-
FTA JARC	-	-	44	200	200
FTA N Frdm	-	-	-	-	-
State STP	-	-	4,000	-	-
Title 1 FHWA	-	-	-	-	-
Other Fed.	-	1,819	-	-	-
Non Fed.	-	1,775	2,192	1,445	1,450
	1,819	-	-	-	-
	1,775	2,192	-	-	-

Tri-Cities Area Transportation Improvement Program  
FY 2005 – FY 2007

**INTERSTATE, PRIMARY & URBAN  
HIGHWAY IMPROVEMENT PROJECTS**

The following Tri-Cities Area highway improvement projects have been identified to receive Federal obligation funding by the Virginia Commonwealth Transportation Board (CTB) and the Tri-Cities Area MPO during the next 3-year period. These projects have been previously recommended for implementation on the basis of planning and/or engineering study from the adopted 2026 Long-Range Transportation Plan for the metropolitan area. Obligation funding for each highway project are provided for preliminary engineering, right-of-way acquisition and construction phases according to the time schedule indicated. The Tri-Cities Area MPO selects Regional Surface Transportation Program (RSTP) projects and Congestion Mitigation and Air Quality (CMAQ) Program projects. Interstate and Primary System projects were selected by the CTB. Urban and Secondary projects were selected by the CTB in cooperation with affected local governments. The CMAQ fund allocations are at an 80% Federal share. The nonfederal share of CMAQ project costs are financed by State and/or local governments. The Tri-Cities Area MPO has no authority to allocate nonfederal CMAQ project cost shares. Each highway improvement project recommended for implementation is financially constrained.

Priorities for the selection of highway improvement projects to be included in the metropolitan TIP are indicated by the year during which obligation funding is anticipated to occur. The identification of a funding source, an obligation amount, and, a funding year are indications of financial constraint. Some projects may be listed for funding under more than one highway system.

**Interstate**

ROUTE:	0095	PROJECT	FO	PROGRAM/SYSTEM	MPO Area	
UPC NO.:	14760	RTE 95 - INTERCHANGE IMPROVEMENTS		Interstate	Tri-Cities	
					<b>DEFICIT PAYOFF*</b>	
<b>STREET NAME:</b>					<b>EST.</b>	<b>SCHEDULE</b>
<b>JURISDICTION:</b>	Chesterfield County				PE	2,389 Complete
<b>DESCRIPTION:</b>	FROM: 0.934 KILOMETER SOUTH OF ROUTE 620 (WOODS EDGE ROAD); TO: 0.658 KILOMETER NORTH OF ROUTE 620 (WOODS EDGE ROAD)				RW	7,409 Complete
					CN	25,994 Complete
					TO	35,793
<b>SCOPE OF WORK:</b>	RECONSTRUCTION					
<b>PROJECT LENGTH:</b>	1.5920 KM					
<b>PRINCIPAL FUND SOURCE:</b>	NH					
<b>OBLIGATIONS (000's)</b>						
Fund Sources		Match	Previous	FY2006	FY2007	FY2008
Federal - NH	PE	0	2,288	0	0	0
	RW	0	7,172	0	0	0
	CN	0	23,029	0	0	0
Federal - STP	PE	0	0	0	0	0
	RW	0	0	0	0	0
	CN	0	2,356	0	0	0
Other	PE	0	101	0	0	0
	RW	0	237	0	0	0
	CN	0	1,427	0	0	0
<b>Federal Total</b>	PE	0	2,288	0	0	0
	RW	0	7,172	0	0	0
	CN	0	25,384	0	0	0

ROUTE:	0095	PROJECT	FO	PROGRAM/SYSTEM	MPO Area	
UPC NO.:	72469	RTE 95 - INTERCHANGE IMPROVEMENT NORTHBOUND ON RAMP		Interstate	Tri-Cities	
<b>REPORT NOTE:</b>	Balance to be funded by City of Colonial Heights. Schedule not available.					
<b>STREET NAME:</b>					<b>EST.</b>	<b>SCHEDULE</b>
<b>JURISDICTION:</b>	Colonial Heights				PE	719 Underway
<b>DESCRIPTION:</b>	AT ROUTE 144 (TEMPLE AVENUE)				RW	271 N/A
					CN	4,297 N/A
					TO	5,287
<b>SCOPE OF WORK:</b>	NEW CONSTRUCTION					
<b>PROJECT LENGTH:</b>						
<b>PRINCIPAL FUND SOURCE:</b>	RSTP					
<b>OBLIGATIONS (000's)</b>						
Fund Sources		Match	Previous	FY2006	FY2007	FY2008
Federal - RSTP	PE	144	491	84	0	0
	RW	0	0	0	0	0
	CN	0	0	0	0	0

District-wide	<i>PROJECT</i>	<i>PROGRAM/SYSTEM</i>	<i>MPO Area</i>
<b>UPC NO.:</b> T2321	<b>DISTRICTWIDE SIGNS (TRI-CITIES MPO)</b>	<i>Interstate</i>	Tri-Cities
<b>REPORT NOTE:</b>	SYIP/STIP UPC 70680		
<b>JURISDICTION:</b>	Richmond District-wide		
<b>DESCRIPTION:</b>	DISTRICTWIDE		
<b>PRINCIPAL FUND SOURCE:</b>			
<b>PROGRAM NOTE:</b>	show districtwide allocations in TIP		

District-wide	<i>PROJECT</i>	<i>PROGRAM/SYSTEM</i>	<i>MPO Area</i>
<b>UPC NO.:</b> T2307	<b>DISTRICTWIDE SIGNALS (TRI-CITIES MPO)</b>	<i>Interstate</i>	Tri-Cities
<b>JURISDICTION:</b>	Richmond District-wide		
<b>DESCRIPTION:</b>	DISTRICTWIDE		
<b>PRINCIPAL FUND SOURCE:</b>			
<b>PROGRAM NOTE:</b>	show districtwide allocations in TIP		

District-wide	<i>PROJECT</i>	<i>PROGRAM/SYSTEM</i>	<i>MPO Area</i>
<b>UPC NO.:</b> T2293	<b>DISTRICTWIDE RUMBLE STRIPS (TRI-CITIES MPO)</b>	<i>Interstate</i>	Tri-Cities
<b>REPORT NOTE:</b>	SYIP/STIP UPC 16840		
<b>JURISDICTION:</b>	Richmond District-wide		
<b>DESCRIPTION:</b>	DISTRICTWIDE		
<b>PRINCIPAL FUND SOURCE:</b>			
<b>PROGRAM NOTE:</b>	show districtwide allocations in TIP		

District-wide	<i>PROJECT</i>	<i>PROGRAM/SYSTEM</i>	<i>MPO Area</i>
<b>UPC NO.:</b> T2279	<b>DISTRICTWIDE PAVEMENT MARKERS (TRI-CITIES MPO)</b>	<i>Interstate</i>	Tri-Cities
<b>REPORT NOTE:</b>	SYIP/STIP UPC 70675		
<b>JURISDICTION:</b>	Richmond District-wide		
<b>DESCRIPTION:</b>	DISTRICTWIDE		
<b>PRINCIPAL FUND SOURCE:</b>			
<b>PROGRAM NOTE:</b>	show districtwide allocations in TIP		

District-wide	<i>PROJECT</i>	<i>PROGRAM/SYSTEM</i>	<i>MPO Area</i>
<b>UPC NO.:</b> T2265	<b>DISTRICTWIDE GUARDRAIL (TRI-CITIES MPO)</b>	<i>Interstate</i>	Tri-Cities
<b>REPORT NOTE:</b>	SYIP/STIP UPC 70671		
<b>JURISDICTION:</b>	Richmond District-wide		
<b>DESCRIPTION:</b>	DISTRICTWIDE		
<b>PRINCIPAL FUND SOURCE:</b>			
<b>PROGRAM NOTE:</b>	show districtwide allocations in TIP		

District-wide	<i>PROJECT</i>	<i>PROGRAM/SYSTEM</i>	<i>MPO Area</i>
<b>UPC NO.:</b> T2237	<b>511 VIRGINIA TRAVEL INFORMATION (TRI-CITIES MPO)</b>	<i>Interstate</i>	Tri-Cities
<b>REPORT NOTE:</b>	SYIP/STIP UPC T286		
<b>JURISDICTION:</b>	Richmond District-wide		
<b>DESCRIPTION:</b>	DISTRICTWIDE		
<b>PRINCIPAL FUND SOURCE:</b>			
<b>PROGRAM NOTE:</b>	show districtwide allocations in TIP		

<b>ROUTE:</b> 0001	<b>PROJECT</b>	NFO	<b>PROGRAM/SYSTEM</b>	<b>MPO Area</b>		
<b>UPC NO.:</b> 73268	Route 1 & Route 460 - Construct Traffic Lane Between Petersburg CL and Route 460		Primary	Tri-Cities		
<b>New Project</b>						
<b>REPORT NOTE:</b>	MPO Project; Balance to be provided by MPO; Complete estimate and schedule to be established at project scoping					
<b>STREET NAME:</b>			<b>EST.</b>	<b>SCHEDULE</b>		
<b>JURISDICTION:</b>	Dinwiddie County		PE 445	Underway		
<b>DESCRIPTION:</b>			RW 0	FY2006		
			<u>CN 4,577</u>	FY2007		
			TO 5,022			
<b>SCOPE OF WORK:</b>	MAJOR WIDENING		<b>SUFFICIENCY RATING:</b> ,			
<b>PROJECT LENGTH:</b>						
<b>PRINCIPAL FUND SOURCE:</b>	STP					
<b>OBLIGATIONS (000's)</b>						
<b>Fund Sources</b>		<b>Match</b>	<b>Previous</b>	<b>FY2006</b>	<b>FY2007</b>	<b>FY2008</b>
Federal - AC	PE	0	0	0	0	0
	RW	0	0	0	0	0
	CN	676	0	0	2,705	0
Federal - RSTP	PE	0	0	0	0	0
	RW	0	0	0	0	0
	CN	239	0	0	957	0
Federal - AC CONVERSION	PE	89	0	0	356	0
	RW	0	0	0	0	0
	CN	365	0	0	0	1,462
<b>Federal Total</b>	PE	89	0	0	356	0
	RW	0	0	0	0	0
	CN	605	0	0	957	1,462

<b>ROUTE:</b> 0010	<b>PROJECT</b>	NFO	<b>PROGRAM/SYSTEM</b>	<b>MPO Area</b>		
<b>UPC NO.:</b> 50016	RTE 10 - CMAQ INTERSECTION IMPROVEMENTS		Primary	Tri-Cities		
<b>REPORT NOTE:</b>	MPO Project - Excess funds to be redistributed by MPO					
<b>STREET NAME:</b>			<b>EST.</b>	<b>SCHEDULE</b>		
<b>JURISDICTION:</b>	Chesterfield County		PE 145	Complete		
<b>DESCRIPTION:</b>	AT ENON CHURCH ROAD		RW 52	Complete		
			<u>CN 369</u>	Underway		
			TO 566			
<b>SCOPE OF WORK:</b>	SAFETY/TRAFFIC OPERS/TSM					
<b>PROJECT LENGTH:</b>						
<b>PRINCIPAL FUND SOURCE:</b>	CM					
<b>OBLIGATIONS (000's)</b>						
<b>Fund Sources</b>		<b>Match</b>	<b>Previous</b>	<b>FY2006</b>	<b>FY2007</b>	<b>FY2008</b>
Federal - CM	PE	37	148	0	0	0
	RW	10	42	0	0	0
	CN	74	295	0	0	0

**Primary**

<b>ROUTE:</b> 0036	<b>PROJECT</b>	<b>NFO</b>	<b>PROGRAM/SYSTEM</b>	<b>MPO Area</b>		
<b>UPC NO.:</b> 72883	RTE 36 -VSU SDWLK(HICKORY RD,RIVER RD,GRANGER ST,E RIVER RD)		Primary	Tri-Cities		
<b>New Project</b>						
<b>REPORT NOTE:</b>	MPO Project - Complete estimate & schedule to be established at project scoping					
<b>STREET NAME:</b>			<b>EST.</b>	<b>SCHEDULE</b>		
<b>JURISDICTION:</b> Chesterfield County			PE 79	Underway		
<b>DESCRIPTION:</b>			RW 83	FY2006		
			CN 196	FY2007		
			TO 358			
<b>SCOPE OF WORK:</b> SAFETY/TRAFFIC OPERS/TSM						
<b>PROJECT LENGTH:</b> 0.6300 MI						
<b>PRINCIPAL FUND SOURCE:</b> CMAQ						
<b>OBLIGATIONS (000's)</b>						
<b>Fund Sources</b>		<b>Match</b>	<b>Previous</b>	<b>FY2006</b>	<b>FY2007</b>	<b>FY2008</b>
Federal - Unassigned	PE	16	63	0	0	0
	RW	1	0	3	0	0
	CN	0	0	0	0	0
Federal - CM	PE	0	0	0	0	0
	RW	0	0	0	0	0
	CN	0	0	0	0	0
<b>Federal Total</b>	PE	16	63	0	0	0
	RW	1	0	3	0	0
	CN	0	0	0	0	0

<b>ROUTE:</b> 0036	<b>PROJECT</b>	<b>NFO</b>	<b>PROGRAM/SYSTEM</b>	<b>MPO Area</b>		
<b>UPC NO.:</b> 75238	RTE 36 - TURN LANES & SIGNAL MODIFICATION AT 2 LOCATIONS		Primary	Tri-Cities		
<b>STREET NAME:</b>			<b>EST.</b>	<b>SCHEDULE</b>		
<b>JURISDICTION:</b> Prince George County			PE 0	Underway		
<b>DESCRIPTION:</b>			RW 0	N/A		
			CN 0	N/A		
			TO 0			
<b>SCOPE OF WORK:</b> SAFETY/TRAFFIC OPERS/TSM						
<b>PROJECT LENGTH:</b>						
<b>PRINCIPAL FUND SOURCE:</b> RSTP						
<b>OBLIGATIONS (000's)</b>						
<b>Fund Sources</b>		<b>Match</b>	<b>Previous</b>	<b>FY2006</b>	<b>FY2007</b>	<b>FY2008</b>
Federal - RSTP	PE	5	21	0	0	0
	RW	0	0	0	0	0
	CN	50	200	0	0	0

ROUTE:	0036	PROJECT	NFO	PROGRAM/SYSTEM	MPO Area	
UPC NO.:	77250	RTE 36 - INSTALL LTLS & SIGNAL MODIFICATIONS ON WBL		Primary	Tri-Cities	
STREET NAME:					EST. SCHEDULE	
JURISDICTION:	Prince George County			PE	24 Complete	
DESCRIPTION:				RW	0 N/A	
				CN	209 Underway	
				TO	233	
SCOPE OF WORK:	SAFETY/TRAFFIC OPERS/TSM					
PROJECT LENGTH:	0.1510 MI					
PRINCIPAL FUND SOURCE:	STP					
<b>OBLIGATIONS (000's)</b>						
Fund Sources		Match	Previous	FY2006	FY2007	FY2008
Federal - RSTP	PE	5	0	19	0	0
	RW	0	0	0	0	0
	CN	42	0	167	0	0

ROUTE:	0106	PROJECT	NFO	PROGRAM/SYSTEM	MPO Area	
UPC NO.:	52506	RTE 106 - CONSTRUCT LEFT TURN LANE ON NBL & MODIFY SIGNAL		Primary	Tri-Cities	
REPORT NOTE:	Hazard Elimination & Open Container Safety					
STREET NAME:					EST. SCHEDULE	
JURISDICTION:	Prince George County			PE	193 Underway	
DESCRIPTION:	ROUND-ABOUT			RW	258 Underway	
				CN	627 FY2006	
				TO	1,078	
SCOPE OF WORK:	SAFETY/TRAFFIC OPERS/TSM					
PROJECT LENGTH:	0.2660 MI					
PRINCIPAL FUND SOURCE:	HES/STP					
<b>OBLIGATIONS (000's)</b>						
Fund Sources		Match	Previous	FY2006	FY2007	FY2008
Federal - STP/HES	PE	24	218	0	0	0
	RW	0	0	0	0	0
	CN	0	0	0	0	0
Other	PE	0	0	0	0	0
	RW	0	258	0	0	0
	CN	0	0	627	0	0
<b>Federal Total</b>	PE	24	218	0	0	0
	RW	0	0	0	0	0
	CN	0	0	0	0	0

<b>ROUTE:</b> 0144	<b>PROJECT</b>	NFO	<b>PROGRAM/SYSTEM</b>	<b>MPO Area</b>		
<b>UPC NO.:</b> 62147	RTE 144 - INSTALL LEFT TURN LANE NORTHBOUND		Primary	Tri-Cities		
<b>REPORT NOTE:</b> Hazard Elimination Safety - Schedule required.						
<b>STREET NAME:</b>			<b>EST.</b>	<b>SCHEDULE</b>		
<b>JURISDICTION:</b> Chesterfield County			PE 116	Underway		
<b>DESCRIPTION:</b> AT ROUTE 1152 (TREELY ROAD)			RW 27	N/A		
			<u>CN 594</u>	N/A		
			TO 737			
<b>SCOPE OF WORK:</b> SAFETY/TRAFFIC OPERS/TSM						
<b>PROJECT LENGTH:</b> 0.4200 MI						
<b>PRINCIPAL FUND SOURCE:</b> STP						
<b>OBLIGATIONS (000's)</b>						
<b>Fund Sources</b>		<b>Match</b>	<b>Previous</b>	<b>FY2006</b>	<b>FY2007</b>	<b>FY2008</b>
Federal - STP/HES	PE	12	104	0	0	0
	RW	0	0	0	0	0
	CN	0	0	0	0	0

<b>ROUTE:</b> 0460	<b>PROJECT</b>	NFO	<b>PROGRAM/SYSTEM</b>	<b>MPO Area</b>		
<b>UPC NO.:</b> 18997	RTE 460 - LEFT TURN LANE AND MODIFY SIGNAL		Primary	Tri-Cities		
<b>REPORT NOTE:</b> Hazard Elimination Safety BCR 0.4, No Longer Qualifies						
<b>STREET NAME:</b>			<b>EST.</b>	<b>SCHEDULE</b>		
<b>JURISDICTION:</b> Prince George County			PE 475	Complete		
<b>DESCRIPTION:</b> FROM: 0.889 KILOMETER EAST OF NBL ROUTE I-295; TO: 0.546 KILOMETER EAST ROUTE 629 (WEST QUAKER ROAD)			RW 1,192	Complete		
			<u>CN 1,678</u>	Underway		
			TO 3,345			
<b>SCOPE OF WORK:</b> MINOR WIDENING						
<b>PROJECT LENGTH:</b> 0.9450 KM						
<b>PRINCIPAL FUND SOURCE:</b> STP						
<b>OBLIGATIONS (000's)</b>						
<b>Fund Sources</b>		<b>Match</b>	<b>Previous</b>	<b>FY2006</b>	<b>FY2007</b>	<b>FY2008</b>
Federal - AC	PE	0	0	0	0	0
	RW	0	0	0	0	0
	CN	144	577	0	0	0
Federal - STP	PE	0	0	0	0	0
	RW	193	770	0	0	0
	CN	387	1,547	0	0	0
Federal - STP/HES	PE	33	294	0	0	0
	RW	23	206	0	0	0
	CN	0	0	0	0	0
Other	PE	0	0	148	0	0
	RW	0	0	0	0	0
	CN	0	0	0	0	0
<b>Federal Total</b>	PE	33	294	0	0	0
	RW	215	976	0	0	0
	CN	387	1,547	0	0	0

**Primary**

<i>ROUTE:</i>	<i>EN05</i>	<i>PROJECT</i>	<b>NFO</b>	<i>PROGRAM/SYSTEM</i>	<i>MPO Area</i>
<i>UPC NO.:</i>	78222	CITY OF COLONIAL HEIGHTS - STREETScape AT GOVERNMENT CENTER		<i>Primary</i>	Tri-Cities
<b>STREET NAME:</b>					<b>EST. SCHEDULE</b>
<b>JURISDICTION:</b>	Colonial Heights			PE	27 FY2006
<b>DESCRIPTION:</b>				RW	0 N/A
				<u>CN</u>	<u>294</u> N/A
				TO	321
<b>SCOPE OF WORK:</b>	ENVIRONMENTALLY RELATED				
<b>PROJECT LENGTH:</b>					
<b>PRINCIPAL FUND SOURCE:</b>	STP				

<i>District-wide</i>	<i>PROJECT</i>	<i>PROGRAM/SYSTEM</i>	<i>MPO Area</i>
<i>UPC NO.:</i>	T2251	DISTRICTWIDE BRIDGE STRENGTHENING & WIDENING (TRI-CITIES MPO)	Tri-Cities
<b>REPORT NOTE:</b>	SYIP/STIP UPC 4012		
<b>JURISDICTION:</b>	Richmond District-wide		
<b>DESCRIPTION:</b>	DISTRICTWIDE		
<b>PRINCIPAL FUND SOURCE:</b>			
<b>PROGRAM NOTE:</b>	show districtwide allocations in TIP		

ROUTE:	0001	PROJECT	FO	PROGRAM/SYSTEM	MPO Area	
UPC NO.:	4594	RTE 1 (BOULEVARD) - 4 LANES WITH CURB, GUTTER & SIDEWALK		Urban	Tri-Cities	
<b>DEFICIT PAYOFF*</b>						
<b>STREET NAME:</b>	BOULEVARD			<b>EST.</b>	<b>SCHEDULE</b>	
<b>JURISDICTION:</b>	Colonial Heights			PE 1,118	Complete	
<b>DESCRIPTION:</b>	FROM: COLONIAL HEIGHTS SCL; TO: LAFAYETTE AVENUE			RW 896	Complete	
				<u>CN 6,550</u>	Complete	
				TO 8,564		
<b>SCOPE OF WORK:</b>	MAJOR WIDENING					
<b>PROJECT LENGTH:</b>	0.4360 MI					
<b>PRINCIPAL FUND SOURCE:</b>	STP					
<b>OBLIGATIONS (000's)</b>						
Fund Sources		Match	Previous	FY2006	FY2007	FY2008
Federal - STP	PE	0	0	0	0	0
	RW	0	0	0	0	0
	CN	134	6,545	0	0	0
Other	PE	0	1,118	0	0	0
	RW	0	896	0	0	0
	CN	0	0	0	0	0
<b>Federal Total</b>	PE	0	0	0	0	0
	RW	0	0	0	0	0
	CN	134	6,545	0	0	0

ROUTE:	0001	PROJECT	NFO	PROGRAM/SYSTEM	MPO Area	
UPC NO.:	52434	RTE 1 - LEFT TURN LANES - PREVIOUS PE ONLY		Urban	Tri-Cities	
<b>REPORT NOTE:</b>	MPO Project Accrual of funds towards CN					
<b>STREET NAME:</b>	BOULEVARD			<b>EST.</b>	<b>SCHEDULE</b>	
<b>JURISDICTION:</b>	Colonial Heights			PE 106	FY2008	
<b>DESCRIPTION:</b>	FROM: WESTOVER; TO: WINDSOR			RW 0	N/A	
				<u>CN 0</u>	N/A	
				TO 106		
<b>SCOPE OF WORK:</b>	ENVIRONMENTALLY RELATED					
<b>PROJECT LENGTH:</b>						
<b>PRINCIPAL FUND SOURCE:</b>	CM					
<b>OBLIGATIONS (000's)</b>						
Fund Sources		Match	Previous	FY2006	FY2007	FY2008
Federal - CM	PE	21	0	0	0	85
	RW	0	0	0	0	0
	CN	0	0	0	0	0

ROUTE: 0001		PROJECT		FO	PROGRAM/SYSTEM		MPO Area	
UPC NO.: 3945		RTE 1 - IMPROVE INT BLVD & DUPUY AVE			Urban		Tri-Cities	
REPORT NOTE: PE Only								
STREET NAME: DUPUY AVE.						EST.	SCHEDULE	
JURISDICTION: Colonial Heights					PE	582	Underway	
DESCRIPTION: FROM: BATTERY PLACE; TO: LEE AVENUE					RW	0	N/A	
					CN	0	N/A	
					TO	582		
SCOPE OF WORK: SAFETY/TRAFFIC OPERS/TSM								
PROJECT LENGTH: 0.3000 KM								
PRINCIPAL FUND SOURCE: STP								
<b>OBLIGATIONS (000's)</b>								
Fund Sources		Match	Previous	FY2006	FY2007	FY2008		
Federal - STP	PE	74	0	298	0	0		
	RW	0	0	0	0	0		
	CN	0	0	0	0	0		
Other	PE	0	210	0	0	0		
	RW	0	0	0	0	0		
	CN	0	0	0	0	0		
<b>Federal Total</b>								
	PE	74	0	298	0	0		
	RW	0	0	0	0	0		
	CN	0	0	0	0	0		

ROUTE: 0036		PROJECT		NFO	PROGRAM/SYSTEM		MPO Area	
UPC NO.: 57963		RTE 36 - SIGNAL COMPUTER SYSTEM - PE ONLY			Urban		Tri-Cities	
REPORT NOTE: MPO to Transfer Funds								
STREET NAME:						EST.	SCHEDULE	
JURISDICTION: Hopewell					PE	92	Underway	
DESCRIPTION: FROM: TEMPLE AVENUE; TO: I-295					RW	0	N/A	
					CN	0	N/A	
					TO	92		
SCOPE OF WORK: SAFETY/TRAFFIC OPERS/TSM								
PROJECT LENGTH:								
PRINCIPAL FUND SOURCE: CM								
<b>OBLIGATIONS (000's)</b>								
Fund Sources		Match	Previous	FY2006	FY2007	FY2008		
Federal - Unassigned	PE	0	55	0	0	0		
	RW	0	0	0	0	0		
	CN	0	0	0	0	0		
Federal - CM	PE	0	0	37	0	0		
	RW	0	0	0	0	0		
	CN	0	0	0	0	0		
<b>Federal Total</b>								
	PE	0	55	37	0	0		
	RW	0	0	0	0	0		
	CN	0	0	0	0	0		

<b>ROUTE:</b> 0036	<b>PROJECT</b>	<b>NFO</b>	<b>PROGRAM/SYSTEM</b>		<b>MPO Area</b>	
<b>UPC NO.:</b> 59118	<b>CONSTRUCT TURN LANES</b>		<i>Urban</i>		Tri-Cities	
<b>REPORT NOTE:</b> MPO project Complete schedule to be established at project scoping						
<b>STREET NAME:</b>				<b>EST.</b>	<b>SCHEDULE</b>	
<b>JURISDICTION:</b> Hopewell			<b>PE</b>	80	<b>FY2008</b>	
<b>DESCRIPTION:</b> AT COLONIAL CORNER			<b>RW</b>	0	N/A	
			<b>CN</b>	0	N/A	
			<b>TO</b>	80		
<b>SCOPE OF WORK:</b> SAFETY/TRAFFIC OPERS/TSM						
<b>PROJECT LENGTH:</b>						
<b>PRINCIPAL FUND SOURCE:</b> CM						
<b>OBLIGATIONS (000's)</b>						
<b>Fund Sources</b>		<b>Match</b>	<b>Previous</b>	<b>FY2006</b>	<b>FY2007</b>	<b>FY2008</b>
Federal - CM	<b>PE</b>	16	0	0	0	64
	<b>RW</b>	0	0	0	0	0
	<b>CN</b>	0	0	0	0	0

<b>ROUTE:</b> U000	<b>PROJECT</b>	<b>NFO</b>	<b>PROGRAM/SYSTEM</b>		<b>MPO Area</b>	
<b>UPC NO.:</b> 1436	<b>CEDAR LEVEL ROAD - 4 LANES</b>		<i>Urban</i>		Tri-Cities	
<b>REPORT NOTE:</b> PE & RW Only and Accrue Funds for CN						
<b>STREET NAME:</b> CEDAR LEVEL RD				<b>EST.</b>	<b>SCHEDULE</b>	
<b>JURISDICTION:</b> Hopewell			<b>PE</b>	1,846	Underway	
<b>DESCRIPTION:</b> FROM: NORTH AVENUE; TO: 0.047 KILOMETER NORTH MILES AVENUE			<b>RW</b>	3,391	Underway	
			<b>CN</b>	0	N/A	
			<b>TO</b>	5,237		
<b>SCOPE OF WORK:</b> MAJOR WIDENING						
<b>PROJECT LENGTH:</b> 1.8400 KM						
<b>PRINCIPAL FUND SOURCE:</b> STP						
<b>OBLIGATIONS (000's)</b>						
<b>Fund Sources</b>		<b>Match</b>	<b>Previous</b>	<b>FY2006</b>	<b>FY2007</b>	<b>FY2008</b>
Federal - STP	<b>PE</b>	369	0	1,477	0	0
	<b>RW</b>	163	3,228	0	0	0
	<b>CN</b>	0	0	0	0	0

<b>ROUTE:</b> U000	<b>PROJECT</b>	<b>NFO</b>	<b>PROGRAM/SYSTEM</b>	<b>MPO Area</b>		
<b>UPC NO.:</b> 52172	COURT HOUSE ROAD/BERRY STREET - PARTIAL PE ONLY		Urban	Tri-Cities		
<b>REPORT NOTE:</b>	PE only					
<b>STREET NAME:</b>	COURTHOUSE/BERRY		<b>EST.</b>	<b>SCHEDULE</b>		
<b>JURISDICTION:</b>	Hopewell		PE	959 Underway		
<b>DESCRIPTION:</b>	FROM: OAKLAWN BOULEVARD; TO: HIGH AVENUE		RW	0 N/A		
			CN	0 N/A		
			TO	959		
<b>SCOPE OF WORK:</b>	MAJOR WIDENING					
<b>PROJECT LENGTH:</b>	1.4000 MI					
<b>PRINCIPAL FUND SOURCE:</b>	STP					
<b>OBLIGATIONS (000's)</b>						
<b>Fund Sources</b>		<b>Match</b>	<b>Previous</b>	<b>FY2006</b>	<b>FY2007</b>	<b>FY2008</b>
Federal - STP	PE	9	451	0	0	0
	RW	0	0	0	0	0
	CN	0	0	0	0	0

<b>ROUTE:</b> 0036	<b>PROJECT</b>	<b>NFO</b>	<b>PROGRAM/SYSTEM</b>	<b>MPO Area</b>		
<b>UPC NO.:</b> 19003	RTE 36 - LEFT TURN LANE FROM OAKLAWN BLVD TO JEFFERSON PARK		Urban	Tri-Cities		
<b>REPORT NOTE:</b>	MPO project Complete schedule to be established					
<b>STREET NAME:</b>	OAKLAWN BLVD.		<b>EST.</b>	<b>SCHEDULE</b>		
<b>JURISDICTION:</b>	Hopewell		PE	14 Complete		
<b>DESCRIPTION:</b>	OAKLAWN BLVD./JEFFERSON PARK		RW	0 N/A		
			CN	0 N/A		
			TO	14		
<b>SCOPE OF WORK:</b>	SAFETY/TRAFFIC OPERS/TSM					
<b>PROJECT LENGTH:</b>	0.0100 KM					
<b>PRINCIPAL FUND SOURCE:</b>	CM					
<b>OBLIGATIONS (000's)</b>						
<b>Fund Sources</b>		<b>Match</b>	<b>Previous</b>	<b>FY2006</b>	<b>FY2007</b>	<b>FY2008</b>
Federal - CM	PE	3	11	0	0	0
	RW	0	0	0	0	0
	CN	0	0	0	0	0

ROUTE:	U000	PROJECT	NFO	PROGRAM/SYSTEM	MPO Area	
UPC NO.:	15831	RIVER ROAD - 2 LANES		Urban	Tri-Cities	
STREET NAME:	RIVER RD.			EST.	SCHEDULE	
JURISDICTION:	Hopewell			PE	881 Complete	
DESCRIPTION:	FROM: 0.104 KILOMETER WEST WCL HOPEWELL; TO: MESA DRIVE			RW	1,699 Complete	
				CN	5,372 Underway	
				TO	7,952	
SCOPE OF WORK:	RECONSTRUCTION					
PROJECT LENGTH:	1.7450 KM	STRUCTURE NO.:	27108	SUFFICIENCY RATING:	--	
PRINCIPAL FUND SOURCE:	STP					
OBLIGATIONS (000's)						
Fund Sources		Match	Previous	FY2006	FY2007	FY2008
Federal - BR	PE	0	0	0	0	0
	RW	0	0	0	0	0
	CN	234	935	0	0	0
Federal - STP	PE	190	760	0	0	0
	RW	38	1,838	0	0	0
	CN	1,298	5,192	0	0	0
Other	PE	0	0	0	0	0
	RW	0	0	0	0	0
	CN	0	12	0	0	0
Federal Total	PE	190	760	0	0	0
	RW	38	1,838	0	0	0
	CN	1,532	6,127	0	0	0
PROGRAM NOTE:	TIP Amendment to Increase FFY05 CN - \$307,493 -BR Funds due to Increase Cost for Award					

ROUTE:	0010	PROJECT	NFO	PROGRAM/SYSTEM	MPO Area	
UPC NO.:	12955	RTE 10 - COORDINATED TRAFFIC SIGNALS		Urban	Tri-Cities	
REPORT NOTE:	MPO Project Accrual of funds towards CN					
STREET NAME:	ROUTE 10			EST.	SCHEDULE	
JURISDICTION:	Hopewell			PE	29 Underway	
DESCRIPTION:	AT HUMMEL ROSS ROAD			RW	0 N/A	
				CN	0 N/A	
				TO	29	
SCOPE OF WORK:	SAFETY/TRAFFIC OPERS/TSM					
PROJECT LENGTH:						
PRINCIPAL FUND SOURCE:	CM					
OBLIGATIONS (000's)						
Fund Sources		Match	Previous	FY2006	FY2007	FY2008
Federal - Unassigned	PE	0	57	0	0	0
	RW	0	0	0	0	0
	CN	0	0	0	0	0
Federal - CM	PE	0	3	0	0	0
	RW	0	0	0	0	0
	CN	0	0	0	0	0
Federal Total	PE	0	59	0	0	0
	RW	0	0	0	0	0
	CN	0	0	0	0	0

<i>ROUTE:</i>	0142	<i>PROJECT</i>	NFO		<i>PROGRAM/SYSTEM</i>	Urban	<i>MPO Area</i>	Tri-Cities
<i>UPC NO.:</i>	15833	RTE 142 (BOYDTON PLANK ROAD) - RECONSTRUCTION						
<b>STREET NAME:</b>	BOYDTON PLANK RD						<b>EST.</b>	<b>SCHEDULE</b>
<b>JURISDICTION:</b>	Petersburg						PE	417 Complete
<b>DESCRIPTION:</b>	FROM: 0.0001 MILE WEST CITY OF PETERSBURG & DINWIDDIE C.L.; TO: 0.123 MILE EAST DUPUY ROAD						RW	122 Complete
							CN	847 Complete
							TO	1,386
<b>SCOPE OF WORK:</b>	RECONSTRUCTION							
<b>PROJECT LENGTH:</b>	0.2690 MI							
<b>PRINCIPAL FUND SOURCE:</b>	STP							
OBLIGATIONS (000's)								
Fund Sources		Match	Previous	FY2006	FY2007	FY2008		
Federal - STP	PE	73	347	0	0	0		
	RW	24	97	0	0	0		
	CN	166	662	0	0	0		
Other	PE	0	0	0	0	0		
	RW	0	0	0	0	0		
	CN	0	37	0	0	0		
<b>Federal Total</b>	PE	73	347	0	0	0		
	RW	24	97	0	0	0		
	CN	166	662	0	0	0		

<i>ROUTE:</i>	U000	<i>PROJECT</i>	NFO		<i>PROGRAM/SYSTEM</i>	Urban	<i>MPO Area</i>	Tri-Cities
<i>UPC NO.:</i>	15832	RIVES ROAD - RECONSTRUCTION - PE ONLY						
<b>REPORT NOTE:</b>	PE only - Accruing funds for RW							
<b>STREET NAME:</b>	RIVES RD.						<b>EST.</b>	<b>SCHEDULE</b>
<b>JURISDICTION:</b>	Petersburg						PE	356 Complete
<b>DESCRIPTION:</b>	FROM: SOUTH CRATER ROAD; TO: 0.426 MILE EAST SOUTH CRATER ROAD						RW	0 N/A
							CN	0 N/A
							TO	356
<b>SCOPE OF WORK:</b>	RECONSTRUCTION							
<b>PROJECT LENGTH:</b>	0.4260 MI							
<b>PRINCIPAL FUND SOURCE:</b>	STP							
OBLIGATIONS (000's)								
Fund Sources		Match	Previous	FY2006	FY2007	FY2008		
Federal - STP	PE	40	314	0	0	0		
	RW	0	0	0	0	0		
	CN	0	0	0	0	0		
Other	PE	0	3	0	0	0		
	RW	0	0	0	0	0		
	CN	0	0	0	0	0		
<b>Federal Total</b>	PE	40	314	0	0	0		
	RW	0	0	0	0	0		
	CN	0	0	0	0	0		

ROUTE: 0001	PROJECT	FO	PROGRAM/SYSTEM	MPO Area		
UPC NO.: 1423	RTE 1 (2ND STREET) - APPROACHES & BRIDGE AT APPOMATTOX RIVER		Urban	Tri-Cities		
<b>DEFICIT PAYOFF*</b>						
<b>STREET NAME:</b>	ROUTE 1			<b>EST. SCHEDULE</b>		
<b>JURISDICTION:</b>	Petersburg		PE	2,310 Complete		
<b>DESCRIPTION:</b>	FROM: WYTHE STREET; TO: NCL PETERSBURG		RW	3,383 Complete		
			CN	23,579 Complete		
			TO	29,272		
<b>SCOPE OF WORK:</b>	BRIDGE REPLACEMENT					
<b>PROJECT LENGTH:</b>	0.7770 MI	<b>STRUCTURE NO.:</b>	26224	<b>SUFFICIENCY RATING:</b> --		
<b>PRINCIPAL FUND SOURCE:</b>	BR/STP					
<b>OBLIGATIONS (000's)</b>						
Fund Sources		Match	Previous	FY2006	FY2007	FY2008
Federal - BR	PE	0	0	0	0	0
	RW	0	0	0	0	0
	CN	245	14,243	0	0	0
Federal - STP	PE	0	0	0	0	0
	RW	0	0	0	0	0
	CN	327	9,109	0	0	0
Other	PE	0	2,310	0	0	0
	RW	0	3,383	0	0	0
	CN	0	301	0	0	0
<b>Federal Total</b>	PE	0	0	0	0	0
	RW	0	0	0	0	0
	CN	572	23,352	0	0	0

**Secondary**

<b>ROUTE:</b>	<b>PROJECT</b>	<b>PROGRAM/SYSTEM</b>	<b>MPO Area</b>	
<b>UPC NO.:</b> T1800	Matoaca/Woodpecker - Turn Lanes	Secondary	Tri-Cities	
<b>REPORT NOTE:</b>	Schedule not available.			
<b>STREET NAME:</b>			<b>EST.</b>	<b>SCHEDULE</b>
<b>JURISDICTION:</b>	Chesterfield County	PE	0	N/A
<b>DESCRIPTION:</b>		RW	0	N/A
		<u>CN</u>	<u>200</u>	N/A
		TO	200	
<b>SCOPE OF WORK:</b>				
<b>PROJECT LENGTH:</b>				
<b>PRINCIPAL FUND SOURCE:</b>				

<b>ROUTE:</b> 0604	<b>PROJECT</b>	<b>NFO</b>	<b>PROGRAM/SYSTEM</b>	<b>MPO Area</b>		
<b>UPC NO.:</b> 8212	RTE 604-RECONSTRUCTION & WIDEN TO 4 LANES		Secondary	Tri-Cities		
<b>REPORT NOTE:</b>	Balance of Secondary funds to be redistributed					
<b>STREET NAME:</b>	GENITO ROAD			<b>EST.</b>	<b>SCHEDULE</b>	
<b>JURISDICTION:</b>	Chesterfield County		PE	0	Complete	
<b>DESCRIPTION:</b>	FROM: 0.424 KILOMETER EAST ROUTE 360 (HULL STREET); TO: 1.124 KILOMETER EAST ROUTE 360 (HULL STREET)		RW	0	Complete	
			<u>CN</u>	<u>2,245</u>	Complete	
			TO	2,245		
<b>SCOPE OF WORK:</b>	MAJOR WIDENING					
<b>PROJECT LENGTH:</b>	0.7000 KM					
<b>PRINCIPAL FUND SOURCE:</b>	STP					
<b>OBLIGATIONS (000's)</b>						
<b>Fund Sources</b>		<b>Match</b>	<b>Previous</b>	<b>FY2006</b>	<b>FY2007</b>	<b>FY2008</b>
Federal - RSTP	PE	0	0	0	0	0
	RW	0	0	0	0	0
	CN	373	1,493	0	0	0
Federal - STP	PE	0	0	0	0	0
	RW	0	0	0	0	0
	CN	75	299	0	0	0
Other	PE	0	0	0	0	0
	RW	0	0	0	0	0
	CN	0	5	0	0	0
<b>Federal Total</b>	PE	0	0	0	0	0
	RW	0	0	0	0	0
	CN	448	1,792	0	0	0
<b>PROGRAM NOTE:</b>	Project closed in FMS					

**Secondary**

<b>ROUTE:</b> 0625	<b>PROJECT</b>	<b>NFO</b>	<b>PROGRAM/SYSTEM</b>	<b>MPO Area</b>		
<b>UPC NO.:</b> 60637	RTE 625 - WIDEN PAVEMENT & SHOULDERS & IMPROVE ALIGNMENT		Secondary	Tri-Cities		
<b>REPORT NOTE:</b>	Hazard Elimination Safety					
<b>STREET NAME:</b>	BRANDERS BRIDGE		<b>EST.</b>	<b>SCHEDULE</b>		
<b>JURISDICTION:</b>	Chesterfield County		PE	75 Complete		
<b>DESCRIPTION:</b>	FROM: ROUTE 1129 (WHITEHOUSE ROAD); TO: 0.5 MILE NORTH ROUTE 1129		RW	75 Complete		
			<u>CN</u>	<u>350</u> Underway		
			TO	500		
<b>SCOPE OF WORK:</b>	SAFETY/TRAFFIC OPERS/TSM					
<b>PROJECT LENGTH:</b>	0.5000 MI					
<b>PRINCIPAL FUND SOURCE:</b>	STP					
<b>OBLIGATIONS (000's)</b>						
<b>Fund Sources</b>		<b>Match</b>	<b>Previous</b>	<b>FY2006</b>	<b>FY2007</b>	<b>FY2008</b>
Federal - STP/HES	PE	23	204	0	0	0
	RW	8	0	68	0	0
	CN	35	0	315	0	0

<b>ROUTE:</b> 0626	<b>PROJECT</b>	<b>NFO</b>	<b>PROGRAM/SYSTEM</b>	<b>MPO Area</b>		
<b>UPC NO.:</b> 58657	RTE 626 - INSTALL LEFT TURN LANE & WIDEN PAVEMENT AND SHOULDERS		Secondary	Tri-Cities		
<b>REPORT NOTE:</b>	Hazard Elimination Safety - Additional Funding from Revenue Sharing Program.					
<b>STREET NAME:</b>	WOODPECKER ROAD		<b>EST.</b>	<b>SCHEDULE</b>		
<b>JURISDICTION:</b>	Chesterfield County		PE	21 Complete		
<b>DESCRIPTION:</b>	HAZARD ELIMINATION SAFETY		RW	519 Complete		
			<u>CN</u>	<u>1,191</u> Underway		
			TO	1,731		
<b>SCOPE OF WORK:</b>	SAFETY/TRAFFIC OPERS/TSM					
<b>PROJECT LENGTH:</b>	0.3180 MI					
<b>PRINCIPAL FUND SOURCE:</b>	STP					
<b>OBLIGATIONS (000's)</b>						
<b>Fund Sources</b>		<b>Match</b>	<b>Previous</b>	<b>FY2006</b>	<b>FY2007</b>	<b>FY2008</b>
Federal - STP	PE	0	0	0	0	0
	RW	0	0	0	0	0
	CN	57	0	229	0	0
Federal - STP/HES	PE	0	0	0	0	0
	RW	38	346	0	0	0
	CN	12	104	0	0	0
Other	PE	0	26	0	0	0
	RW	0	0	135	0	0
	CN	0	431	358	0	0
<b>Federal Total</b>	PE	0	0	0	0	0
	RW	38	346	0	0	0
	CN	69	104	229	0	0
<b>PROGRAM NOTE:</b>	TIP Amd. to add STP/Hes funding to CN phase in FY05 in the amount of \$ 104,310 & Reduce Projected STP by \$52,992 in FY05; (sab)					

**Secondary**

<b>ROUTE:</b> 0628	<b>PROJECT</b>	<b>NFO</b>	<b>PROGRAM/SYSTEM</b>		<b>MPO Area</b>	
<b>UPC NO.:</b> 52980	RTE 628 - REALIGN TO ELIMINATE CURVE		Secondary		Tri-Cities	
<b>REPORT NOTE:</b>	Hazard Elimination Safety - PE & R/W Only - Accrual of Funds for Construction.					
<b>STREET NAME:</b>	HICKORY ROAD			<b>EST.</b>	<b>SCHEDULE</b>	
<b>JURISDICTION:</b>	Chesterfield County		PE	225	Complete	
<b>DESCRIPTION:</b>	HAZARD ELIMINATION SAFETY		RW	297	Complete	
			CN	0	Complete	
			TO	522		
<b>SCOPE OF WORK:</b>	SAFETY/TRAFFIC OPERS/TSM					
<b>PROJECT LENGTH:</b>	0.2960 MI					
<b>PRINCIPAL FUND SOURCE:</b>	STP					
<b>OBLIGATIONS (000's)</b>						
<b>Fund Sources</b>		<b>Match</b>	<b>Previous</b>	<b>FY2006</b>	<b>FY2007</b>	<b>FY2008</b>
Federal - STP	PE	0	0	0	0	0
	RW	0	0	0	0	0
	CN	141	564	0	0	0
Federal - STP/HES	PE	24	217	0	0	0
	RW	30	267	0	0	0
	CN	21	185	0	0	0
Other	PE	0	0	0	0	0
	RW	0	0	0	0	0
	CN	0	8	0	0	0
<b>Federal Total</b>	PE	24	217	0	0	0
	RW	30	267	0	0	0
	CN	161	748	0	0	0

<b>ROUTE:</b> 0622	<b>PROJECT</b>	<b>NFO</b>	<b>PROGRAM/SYSTEM</b>		<b>MPO Area</b>	
<b>UPC NO.:</b> 12557	BALTIMORE ROAD		Secondary		Tri-Cities	
<b>REPORT NOTE:</b>	Combination of rehab/reconstruction with some spot improvements. Accidents (8/1/99-7/31/02) 4(3 with injuries).					
<b>STREET NAME:</b>	BALTIMORE ROAD			<b>EST.</b>	<b>SCHEDULE</b>	
<b>JURISDICTION:</b>	Dinwiddie County		PE	290	Underway	
<b>DESCRIPTION:</b>			RW	1,396	FY2007	
			CN	3,114	FY2010	
			TO	4,800		
<b>SCOPE OF WORK:</b>	MINOR WIDENING					
<b>PROJECT LENGTH:</b>	3.4200 MI					
<b>PRINCIPAL FUND SOURCE:</b>	STP					
<b>OBLIGATIONS (000's)</b>						
<b>Fund Sources</b>		<b>Match</b>	<b>Previous</b>	<b>FY2006</b>	<b>FY2007</b>	<b>FY2008</b>
Federal - STP	PE	-42	-168	0	0	0
	RW	0	0	0	0	0
	CN	0	0	0	0	0
Other	PE	0	80	0	0	0
	RW	0	0	0	0	0
	CN	0	0	0	0	0
<b>Federal Total</b>	PE	-42	-168	0	0	0
	RW	0	0	0	0	0
	CN	0	0	0	0	0

Miscellaneous

<b>ROUTE:</b> <b>UPC NO.:</b> T1792	<b>PROJECT</b> Ozone Alert - Multijurisdictional	<b>PROGRAM/SYSTEM</b> Miscellaneous	<b>MPO Area</b> Tri-Cities	
<b>STREET NAME:</b>			<b>EST.</b>	<b>SCHEDULE</b>
<b>JURISDICTION:</b> Petersburg		PE	0	N/A
<b>DESCRIPTION:</b>		RW	0	N/A
		<u>CN</u>	<u>0</u>	<u>N/A</u>
		TO	0	
<b>SCOPE OF WORK:</b>				
<b>PROJECT LENGTH:</b>				
<b>PRINCIPAL FUND SOURCE:</b>				

<b>Balance Entry</b> <b>UPC NO.:</b> 70722	<b>PROJECT</b> RICHMOND TRI-CITIES CMAQ BALANCE ENTRY	<b>PROGRAM/SYSTEM</b> Miscellaneous	<b>MPO Area</b> Tri-Cities	
<b>JURISDICTION:</b> Richmond District-wide				
<b>DESCRIPTION:</b>				
<b>PRINCIPAL FUND SOURCE:</b> STP				

<b>ROUTE:</b> EN98 <b>UPC NO.:</b> 50113	<b>PROJECT</b> CONSTRUCTION OF SIDEWALKS	<b>PROGRAM/SYSTEM</b> Miscellaneous	<b>MPO Area</b> Tri-Cities			
<b>REPORT NOTE:</b>	Bicycle/Pedestrian Improvement - Additional funding to be provided through Enhancement Program					
<b>STREET NAME:</b> HALLOWAY AVE.			<b>EST.</b>	<b>SCHEDULE</b>		
<b>JURISDICTION:</b> Chesterfield County		PE	115	Complete		
<b>DESCRIPTION:</b> FROM: 0.831 MILE SOUTH ROUTE 628 (HICKORY ROAD); TO: ROUTE 628 (HICKORY ROAD)		RW	456	N/A		
		<u>CN</u>	<u>538</u>	<u>Underway</u>		
		TO	1,109			
<b>SCOPE OF WORK:</b> SAFETY/TRAFFIC OPERS/TSM						
<b>PROJECT LENGTH:</b> 0.8310 MI						
<b>PRINCIPAL FUND SOURCE:</b> STP						
<b>OBLIGATIONS (000's)</b>						
<b>Fund Sources</b>		<b>Match</b>	<b>Previous</b>	<b>FY2006</b>	<b>FY2007</b>	<b>FY2008</b>
Federal - DEMO	PE	60	240	0	0	0
	RW	0	0	0	0	0
	CN	0	0	0	0	0
<b>PROGRAM NOTE:</b>	Project "grouped" see STIP for district obligations					

**Miscellaneous**

<b>ROUTE:</b> RPSF	<b>PROJECT</b>	<b>NFO</b>	<b>PROGRAM/SYSTEM</b>	<b>MPO Area</b>
<b>UPC NO.:</b> 72904	RSTP TRANSPORTATION PLANNING SUPPLMENTAL FUNDING FOR CRATER PDC		Miscellaneous	Tri-Cities
				<b>New Project</b>
<b>STREET NAME:</b>			<b>EST.</b>	<b>SCHEDULE</b>
<b>JURISDICTION:</b> Richmond District-wide			PE 103	Underway
<b>DESCRIPTION:</b>			RW 0	N/A
			CN 0	N/A
			TO 103	
<b>SCOPE OF WORK:</b> STUDIES ONLY				
<b>PROJECT LENGTH:</b>				
<b>PRINCIPAL FUND SOURCE:</b> STP				
<b>OBLIGATIONS (000's)</b>				
<b>Fund Sources</b>		<b>Match</b>	<b>Previous</b>	<b>FY2006</b>
				<b>FY2007</b>
				<b>FY2008</b>
Federal - RSTP	PE	21	82	0
	RW	0	0	0
	CN	0	0	0
<b>PROGRAM NOTE:</b>	STIP Amendment to Increase PE Phase due to increase in estimate & Obligate \$58,400 -RSTP; STIP Amd # 9-FY05 - FHWA Approval 4/6/05			

<b>Balance Entry</b>	<b>PROJECT</b>	<b>NFO</b>	<b>PROGRAM/SYSTEM</b>	<b>MPO Area</b>
<b>UPC NO.:</b> 70725	RICHMOND TRI-CITIES REGIONAL STP (RSTP) BALANCE ENTRY		Miscellaneous	Tri-Cities
<b>JURISDICTION:</b> Richmond District-wide				
<b>DESCRIPTION:</b>				
<b>PRINCIPAL FUND SOURCE:</b> STP				

<b>Budget Item</b>	<b>PROJECT</b>	<b>PROGRAM/SYSTEM</b>	<b>MPO Area</b>
<b>UPC NO.:</b> T2093	TRI-CITIES MPO - PREVENTIVE MAINTENANCE & SYSTEM PRESERVATION (SYSTEM OPERATIONS) - NH, IM, and STP	Miscellaneous	Tri-Cities
<b>REPORT NOTE:</b>	Preventive maintenance and system preservation projs that are cost-effective strategies for extending the service life of existing pavements, BRs, & essential hwy appurtenances on federal-aid hwys, included are recon., resurf., restor and rehab projs		
<b>JURISDICTION:</b> Richmond District-wide			
<b>DESCRIPTION:</b>	See STIP (T2129) for Obligations		
<b>PRINCIPAL FUND SOURCE:</b>			
<b>PROGRAM NOTE:</b>			

**Miscellaneous**

Budget Item	PROJECT	PROGRAM/SYSTEM	MPO Area
<b>UPC NO.:</b> T2092	TRI-CITIES MPO - TRAFFIC AND SAFETY OPERATIONS (SYSTEM OPERATIONS) - NH, IM, STP Funded	Miscellaneous	Tri-Cities
<b>REPORT NOTE:</b>	Traffic and Safety Operations		
<b>JURISDICTION:</b>	Richmond District-wide		
<b>DESCRIPTION:</b>	See STIP (T2129) for Obligations		
<b>PRINCIPAL FUND SOURCE:</b>			
<b>PROGRAM NOTE:</b>			

Budget Item	PROJECT	PROGRAM/SYSTEM	MPO Area
<b>UPC NO.:</b> T2091	TRI-CITIES MPO - BRIDGE (SYSTEM OPERATIONS) - BR FUNDED	Miscellaneous	Tri-Cities
<b>REPORT NOTE:</b>	Bridge system preservation/preventive maintenance, bridge safety inspections on NBI bridges, minor and major bridge rehabilitation, and bridge replacements.		
<b>JURISDICTION:</b>	Richmond District-wide		
<b>DESCRIPTION:</b>	See STIP (T2129) for Obligations		
<b>PRINCIPAL FUND SOURCE:</b>			
<b>PROGRAM NOTE:</b>			

District-wide	PROJECT	PROGRAM/SYSTEM	MPO Area
<b>UPC NO.:</b> T2341	ITS DISTRICTWIDE (TRI-CITIES MPO)	Miscellaneous	Tri-Cities
<b>REPORT NOTE:</b>	SYIP/STIP UPC 70711		
<b>JURISDICTION:</b>	Richmond District-wide		
<b>DESCRIPTION:</b>	DISTRICTWIDE		
<b>PRINCIPAL FUND SOURCE:</b>			
<b>PROGRAM NOTE:</b>	show districtwide allocations in TIP		

# Public Transportation

<b>Public Transportation</b>	<b>PROJECT</b>	<b>PROGRAM/SYSTEM</b>	<b>MPO Area</b>
<b>UPC NO.: 76618</b>	<b>CONSTRUCTION OF MULTI-MODAL CENTER</b>	<b>Public Transportation</b>	<b>Tri-Cities</b>
<b>JURISDICTION:</b> Petersburg			
<b>DESCRIPTION:</b>			
<b>PRINCIPAL FUND SOURCE:</b>			

**Rail**

<b>ROUTE:</b> 0156	<b>PROJECT</b>	<b>NFO</b>	<b>PROGRAM/SYSTEM</b>	<b>MPO Area</b>
<b>UPC NO.:</b> 68122	RTE 156-WINSTON CHURCHILL DR-CANTLVR FLSHG LGHTS & ENT GATES		<i>Rail</i>	Tri-Cities
<b>REPORT NOTE:</b> Balance to be provided by Norfolk Southern RR Company.				
<b>STREET NAME:</b>			<b>EST.</b>	<b>SCHEDULE</b>
<b>JURISDICTION:</b> Hopewell		<b>PE</b>	0	Complete
<b>DESCRIPTION:</b> FROM: AT NORFOLK SOUTHERN		<b>RW</b>	0	N/A
RAILROAD (DOT# 467506F); TO: (0.06 MILE		<b>CN</b>	<u>231</u>	Underway
NORTHEAST 1ST STREET)		<b>TO</b>	231	
<b>SCOPE OF WORK:</b> SAFETY/TRAFFIC OPERS/TSM				
<b>PROJECT LENGTH:</b>				
<b>PRINCIPAL FUND SOURCE:</b> STP				
<b>PROGRAM NOTE:</b> Applied \$73,000 in FY05 Rail funds. Project "grouped" see STIP for district obligations				

<b>ROUTE:</b> 0725	<b>PROJECT</b>	<b>NFO</b>	<b>PROGRAM/SYSTEM</b>	<b>MPO Area</b>
<b>UPC NO.:</b> 65143	RTE 725 - UPGRADE TO 12" LENS FLASHING LIGHTS W/SIMULTANEOUS		<i>Rail</i>	Tri-Cities
<b>REPORT NOTE:</b> Balance of \$3,000.00 to be provided by Norfolk Southern RR Company.				
<b>STREET NAME:</b>			<b>EST.</b>	<b>SCHEDULE</b>
<b>JURISDICTION:</b> Prince George County		<b>PE</b>	0	Complete
<b>DESCRIPTION:</b> FROM: INTERCONNECT WITH TRAFFIC		<b>RW</b>	0	N/A
SIGNAL AT ROUTE 144 - NS RAILROAD;		<b>CN</b>	<u>28</u>	Underway
TO: DOT # 467-493G (225 FEET NORTH		<b>TO</b>	28	
ROUTE 144)				
<b>SCOPE OF WORK:</b> SAFETY/TRAFFIC OPERS/TSM				
<b>PROJECT LENGTH:</b>				
<b>PRINCIPAL FUND SOURCE:</b> STP				
<b>PROGRAM NOTE:</b> Transferred \$1,440 to unobligated reserve. Project "grouped" see STIP for district obligations				

<b>ROUTE:</b> U000	<b>PROJECT</b>	<b>NFO</b>	<b>PROGRAM/SYSTEM</b>	<b>MPO Area</b>
<b>UPC NO.:</b> 56627	CITY OF HOPEWELL - WINSTON CHURCHILL DRIVE		<i>Rail</i>	Tri-Cities
<b>STREET NAME:</b>			<b>EST.</b>	<b>SCHEDULE</b>
<b>JURISDICTION:</b> Hopewell		<b>PE</b>	0	N/A
<b>DESCRIPTION:</b> FROM: .10 MILE NORTHEAST OF ROUTE		<b>RW</b>	0	N/A
36. CSX RAILROAD DOT#623-602M; TO:		<b>CN</b>	<u>80</u>	Complete
INSTALL RUBBERIZED CROSSING		<b>TO</b>	80	
SURFACE				
<b>SCOPE OF WORK:</b> SAFETY/TRAFFIC OPERS/TSM				
<b>PROJECT LENGTH:</b>				
<b>PRINCIPAL FUND SOURCE:</b> STP				
<b>PROGRAM NOTE:</b> Project "grouped" see STIP for district obligations				

**Rail**

<i>ROUTE:</i>	<i>U000</i>	<i>PROJECT</i>	<b>NFO</b>	<i>PROGRAM/SYSTEM</i>	<i>MPO Area</i>
<i>UPC NO.:</i>	<i>58410</i>	<i>S. 15TH ST. INSTALL CONCRETE CROSSING SURACE, GATES &amp; LIGHTS</i>		<i>Rail</i>	<i>Tri-Cities</i>
<b>STREET NAME:</b>					<b>EST. SCHEDULE</b>
<b>JURISDICTION:</b>	Hopewell			<b>PE</b>	0 Complete
<b>DESCRIPTION:</b>	FROM: 0.01 MILE NORTH SPRUCE; TO: CSX RAILROAD DOT #623600Y			<b>RW</b>	0 N/A
				<b>CN</b>	236 Complete
				<b>TO</b>	236
<b>SCOPE OF WORK:</b>	SAFETY/TRAFFIC OPERS/TSM				
<b>PROJECT LENGTH:</b>	0.0100 MI				
<b>PRINCIPAL FUND SOURCE:</b>	STP				
<b>PROGRAM NOTE:</b>	Project "grouped" See STIP for district obligations				

**Enhancement**

<b>ROUTE:</b> EN02	<b>PROJECT</b>	NFO	<b>PROGRAM/SYSTEM</b>	<b>MPO Area</b>
<b>UPC NO.:</b> 63590	CITY OF HOPEWELL - BEACON THEATRE		Enhancement	Tri-Cities
<b>REPORT NOTE:</b>				
<b>STREET NAME:</b>			<b>EST.</b>	<b>SCHEDULE</b>
<b>JURISDICTION:</b> Hopewell			PE 30	Underway
<b>DESCRIPTION:</b> CONSTRUCTION OF CROSSWALKS AND PEDESTRIAN FACILITIES			RW 0	N/A
			CN 261	FY2007
			TO 291	
<b>SCOPE OF WORK:</b> ENVIRONMENTALLY RELATED				
<b>PROJECT LENGTH:</b>				
<b>PRINCIPAL FUND SOURCE:</b> STP				
<b>PROGRAM NOTE:</b>				

<b>ROUTE:</b> EN93	<b>PROJECT</b>	NFO	<b>PROGRAM/SYSTEM</b>	<b>MPO Area</b>		
<b>UPC NO.:</b> 13789	RENOVATION OF HIST. TRAIN STATION & PEDESTRAIN/BICYCLE TRAIL		Enhancement	Tri-Cities		
<b>STREET NAME:</b>						
<b>JURISDICTION:</b> Petersburg			<b>EST.</b> 339	<b>SCHEDULE</b> Complete		
<b>DESCRIPTION:</b> APPOMATTOX RAIL STATION/APPOMATTOX RIVER HERITAGE TRAIL			RW 0	N/A		
			CN 1,299	Underway		
			TO 1,638			
<b>SCOPE OF WORK:</b> ENVIRONMENTALLY RELATED						
<b>PROJECT LENGTH:</b>						
<b>PRINCIPAL FUND SOURCE:</b> STP						
<b>OBLIGATIONS (000's)</b>						
<b>Fund Sources</b>		<b>Match</b>	<b>Previous</b>	<b>FY2006</b>	<b>FY2007</b>	<b>FY2008</b>
Federal - Unassigned	PE	0	173	0	0	0
	RW	0	0	0	0	0
	CN	0	0	0	0	0
Federal - STP	PE	15	62	0	0	0
	RW	0	0	0	0	0
	CN	0	0	0	0	0
Federal - STP/HES	PE	48	192	0	0	0
	RW	0	0	0	0	0
	CN	0	0	0	0	0
Federal - STP/RR	PE	1,214	4,855	0	0	0
	RW	0	0	0	0	0
	CN	0	0	0	0	0
Federal - TQ	PE	95	382	0	0	0
	RW	0	0	0	0	0
	CN	0	0	0	0	0
<b>Federal Total</b>	PE	<b>1,373</b>	<b>5,663</b>	<b>0</b>	<b>0</b>	<b>0</b>
	RW	0	0	0	0	0
	CN	0	0	0	0	0
<b>PROGRAM NOTE:</b> Project "grouped" see STIP for district obligations						

## Enhancement

FY2006-2008 STIP

RICHMOND DISTRICT

ROUTE: EN97	PROJECT	NFO	PROGRAM/SYSTEM	MPO Area
UPC NO.: 17604	CITY POINT RAILS AND WATERWAYS HISTORY WALK		Enhancement	Tri-Cities
<b>STREET NAME:</b>				
<b>JURISDICTION:</b>	Hopewell		PE	EST. 0 SCHEDULE Complete
<b>DESCRIPTION:</b>	FROM: CONTINUOUS PEDESTRIAN TRAIL EXTENDING ALONG THE; TO: STREETS OF THE HISTORIC DISTRICT IN HOPEWELL		RW	0 N/A
			CN	179 Underway
			TO	179
<b>SCOPE OF WORK:</b>				
<b>PROJECT LENGTH:</b>				
<b>PRINCIPAL FUND SOURCE:</b> STP				
<b>PROGRAM NOTE:</b> Project "grouped" see STIP for district obligations				

ROUTE: EN98	PROJECT	NFO	PROGRAM/SYSTEM	MPO Area
UPC NO.: 18795	VSU/ETTRICK RIVERFRONT TRAIL		Enhancement	Tri-Cities
<b>STREET NAME:</b>				
<b>JURISDICTION:</b>	Chesterfield County		PE	EST. 5 SCHEDULE Underway
<b>DESCRIPTION:</b>	FROM: CONSTRUCT 2 MILE TRAIL ALONG THE APPOMATTOX; TO: RIVER		RW	0 N/A
			CN	0 N/A
			TO	5
<b>SCOPE OF WORK:</b> ENVIRONMENTALLY RELATED				
<b>PROJECT LENGTH:</b>				
<b>PRINCIPAL FUND SOURCE:</b> STP				
<b>PROGRAM NOTE:</b> Project "grouped" See STIP for district obligations				

ROUTE: EN99	PROJECT	NFO	PROGRAM/SYSTEM	MPO Area
UPC NO.: 51998	SIDEWALK, UTILITY, LANDSCAPING AND LIGHTING IMPROVEMENTS		Enhancement	Tri-Cities
<b>STREET NAME:</b>				
<b>JURISDICTION:</b>	Colonial Heights		PE	EST. 8 SCHEDULE Complete
<b>DESCRIPTION:</b>	FROM: NCL (CHESTERFIELD COUNTY); TO: SCL (PETERSBURG)		RW	0 Complete
			CN	221 Underway
			TO	229
<b>SCOPE OF WORK:</b> ENVIRONMENTALLY RELATED				
<b>PROJECT LENGTH:</b>				
<b>PRINCIPAL FUND SOURCE:</b> STP				
<b>PROGRAM NOTE:</b> Project "grouped" See STIP for district obligations				

